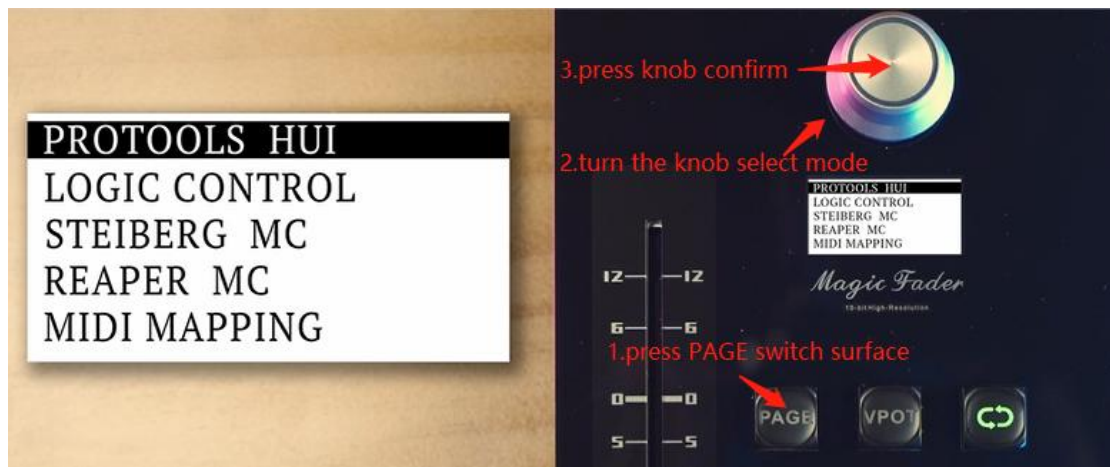


## Magic Fader setting in different DAW

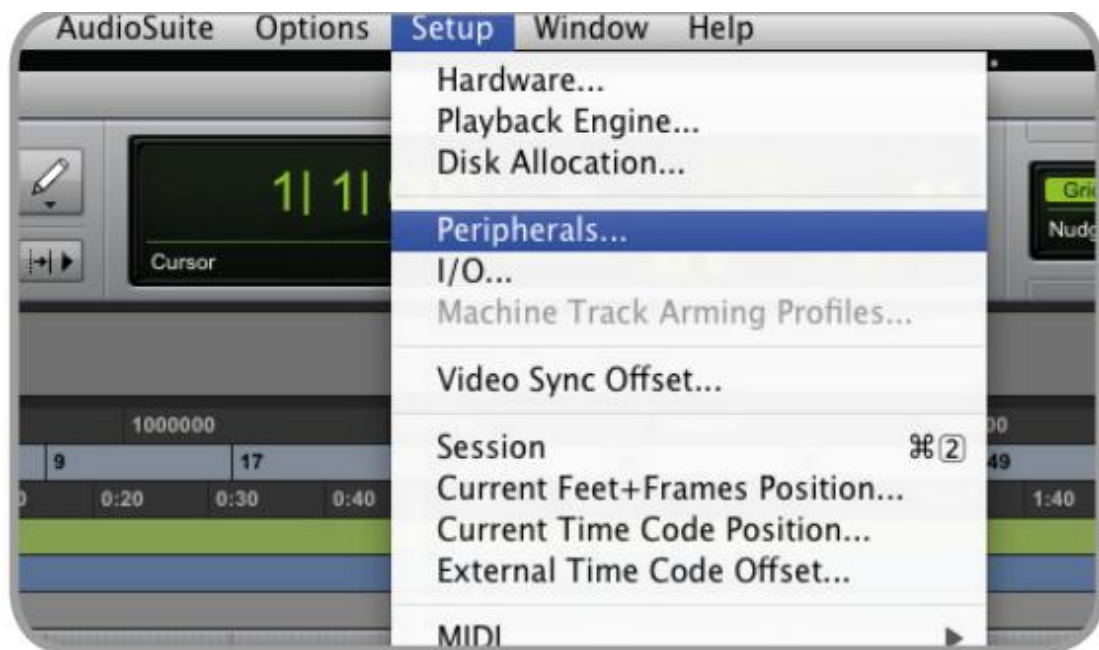
The way to select agreement is press PAGE switch surface->turn the knob to select->press knob



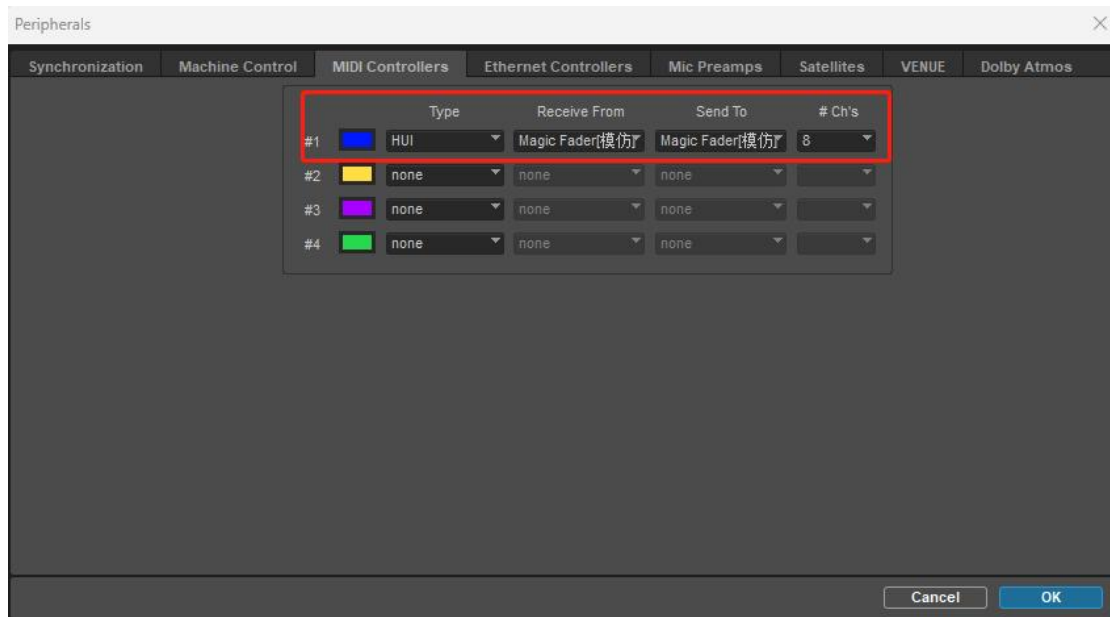
**Lists for Protools; Logic; Cubase; Studio One; FL**

### 1. Protools (Select 'Protools HUI' mode)

(1) Setup -> Peripherals



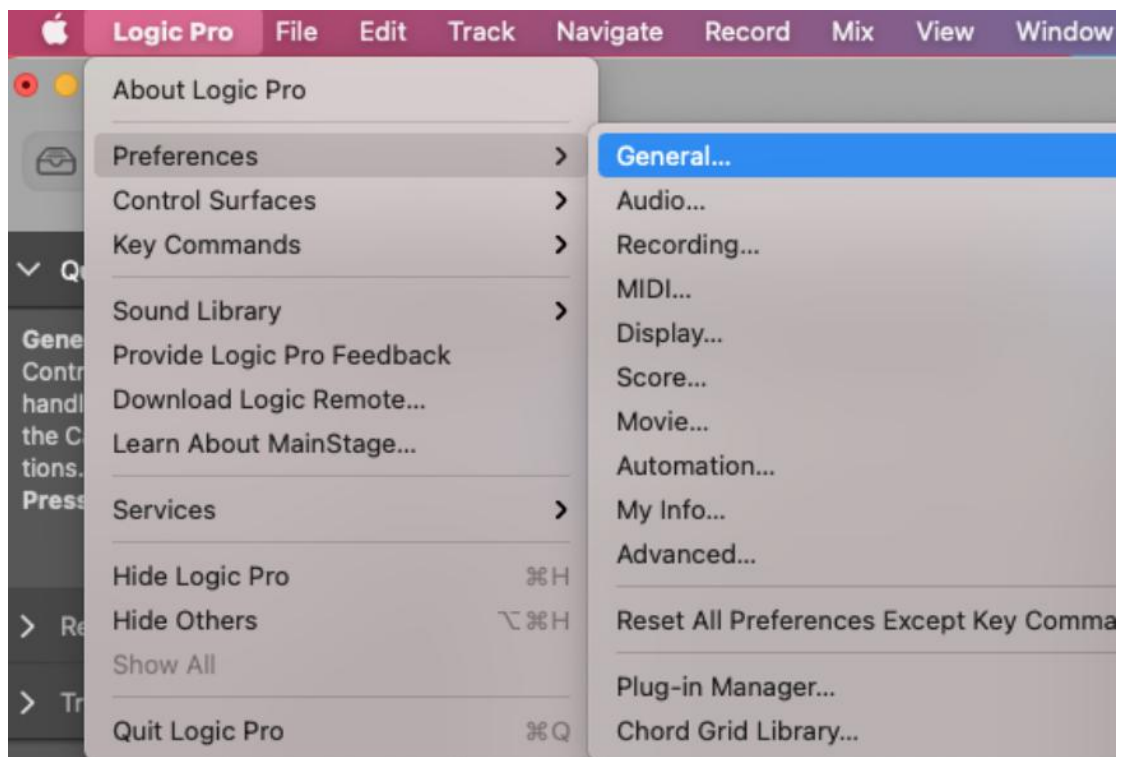
(2) Type select HUI and select Magic Fader



(3) Done

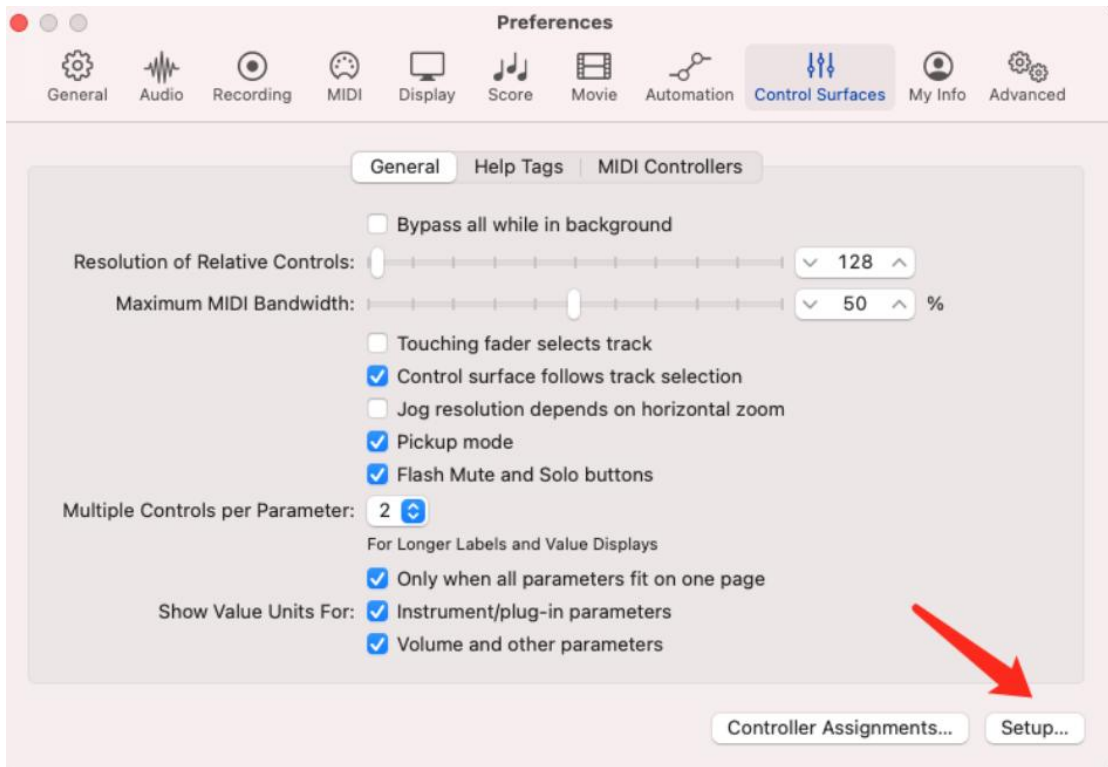
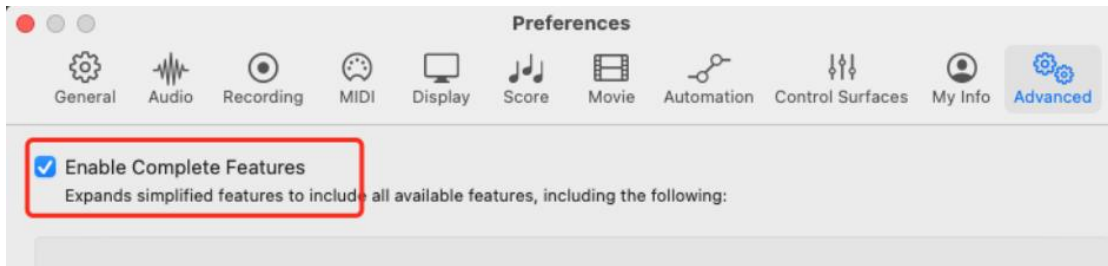
## 2. Logic Pro (Select 'Logic Control' mode)

(1) 【Logic pro】->【General】

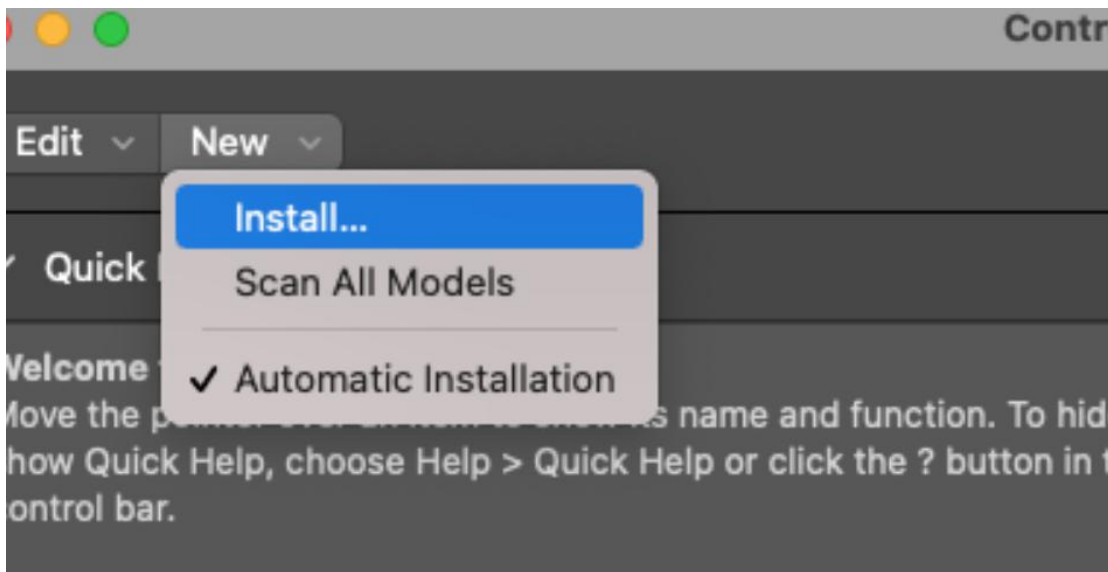


(2) 【Control Surfaces】->【Setup】

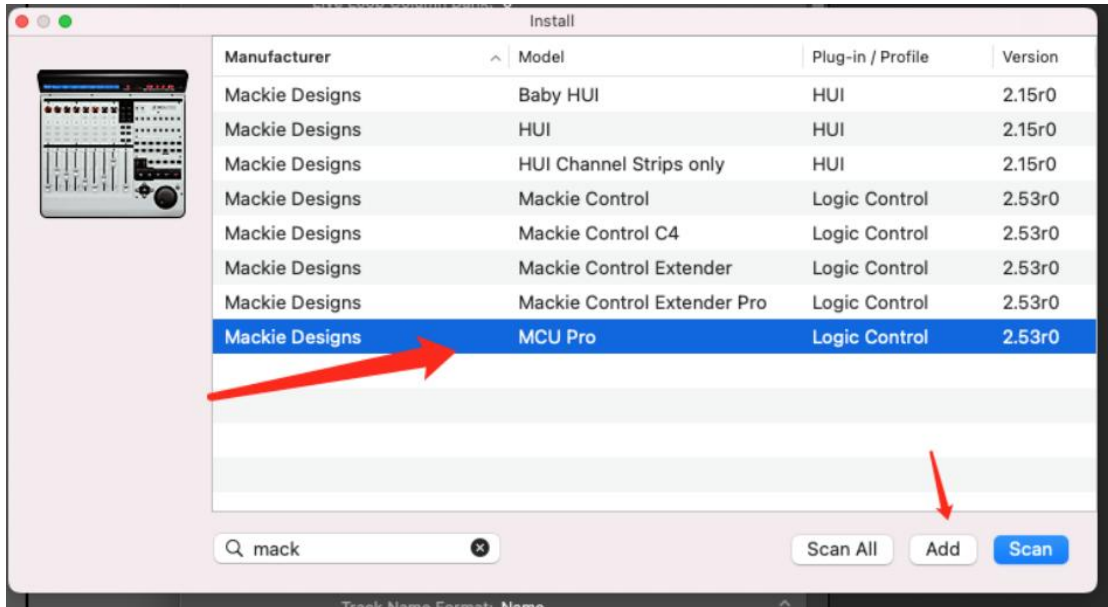
If you don't have this menu, you should enable Complete Features first



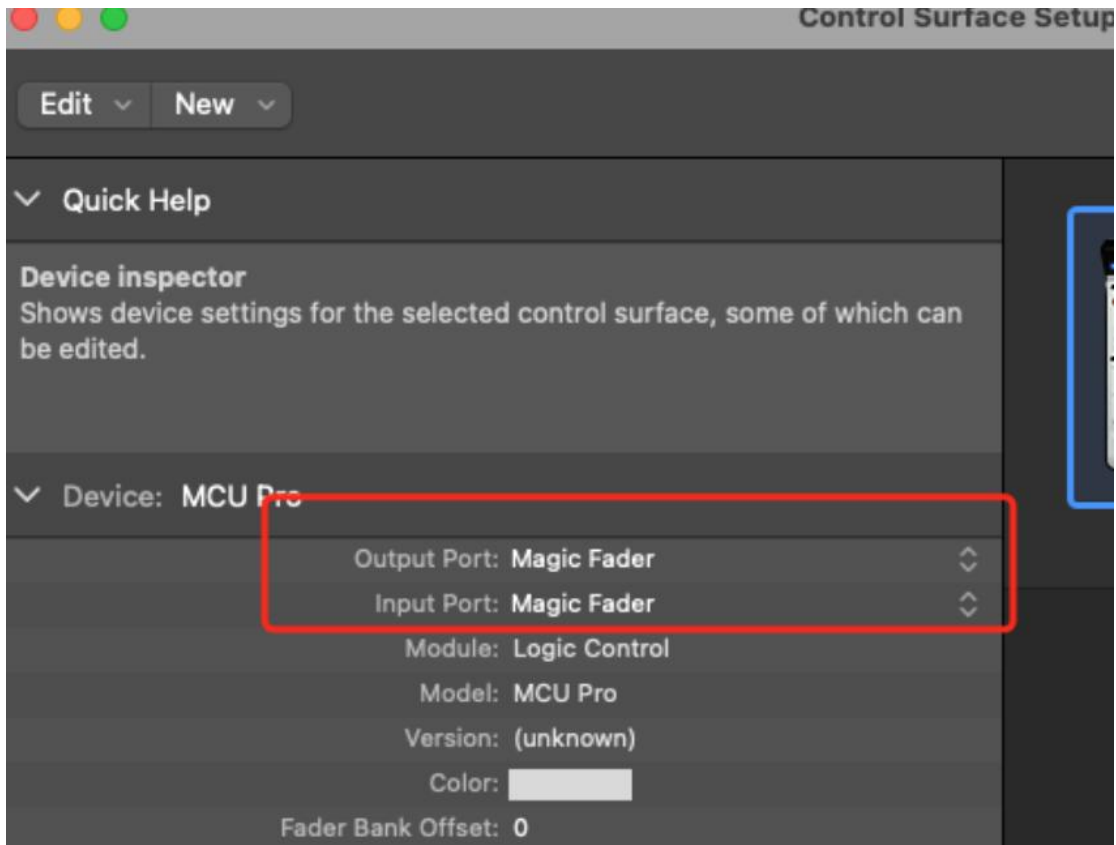
(3) New interface click **【New】** -> **【Install】**



(4) Search for MCU Pro Mackie Designs and Add it



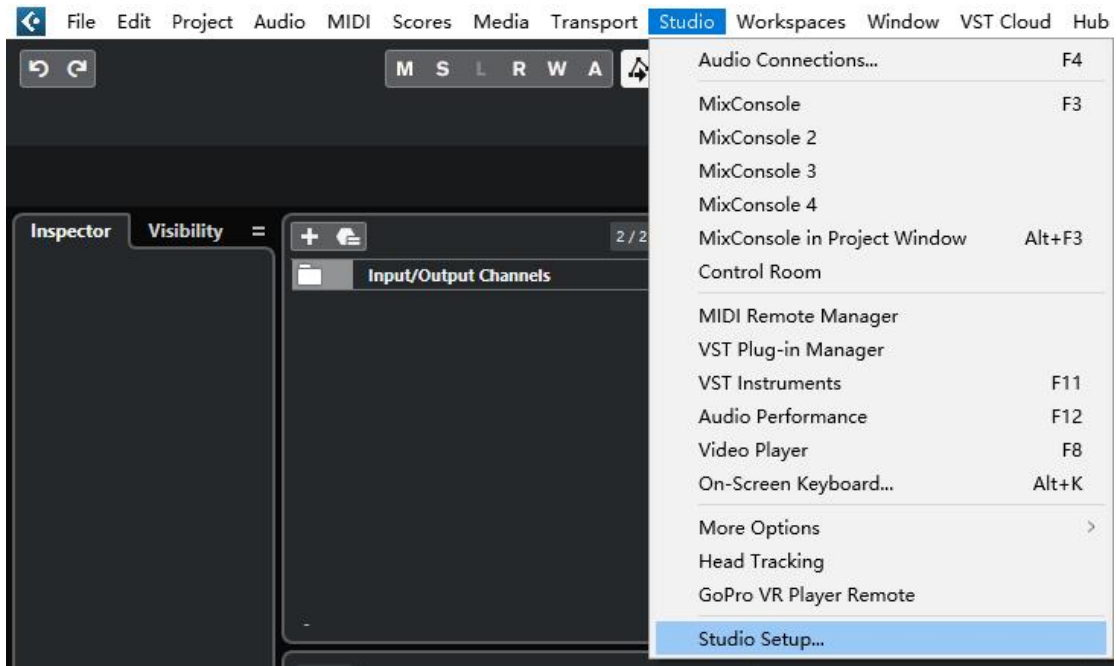
(5) New Surface Input/Output Port select Magic Fader



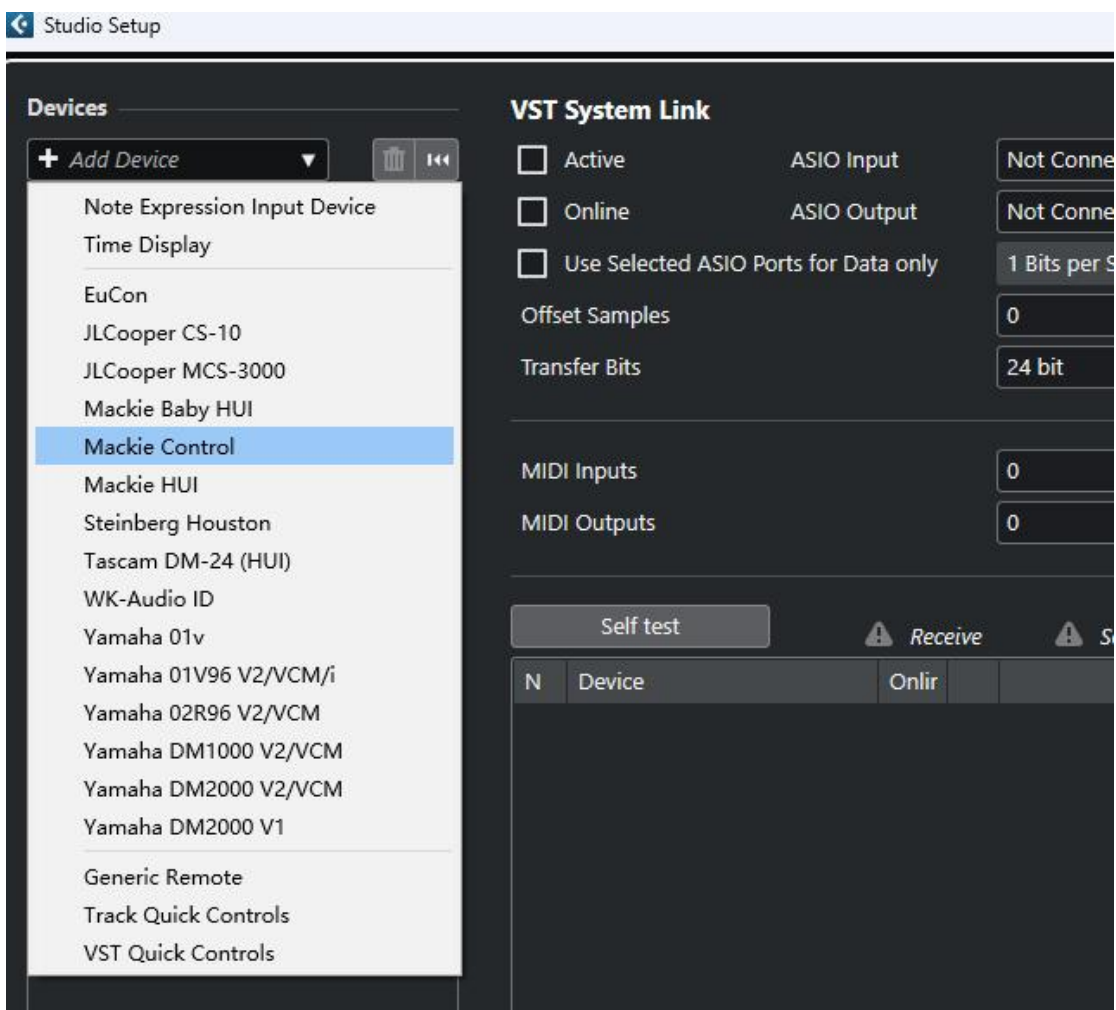
(6) Done

### 3. Cubase (Select 'STEIBERG MC' mode)

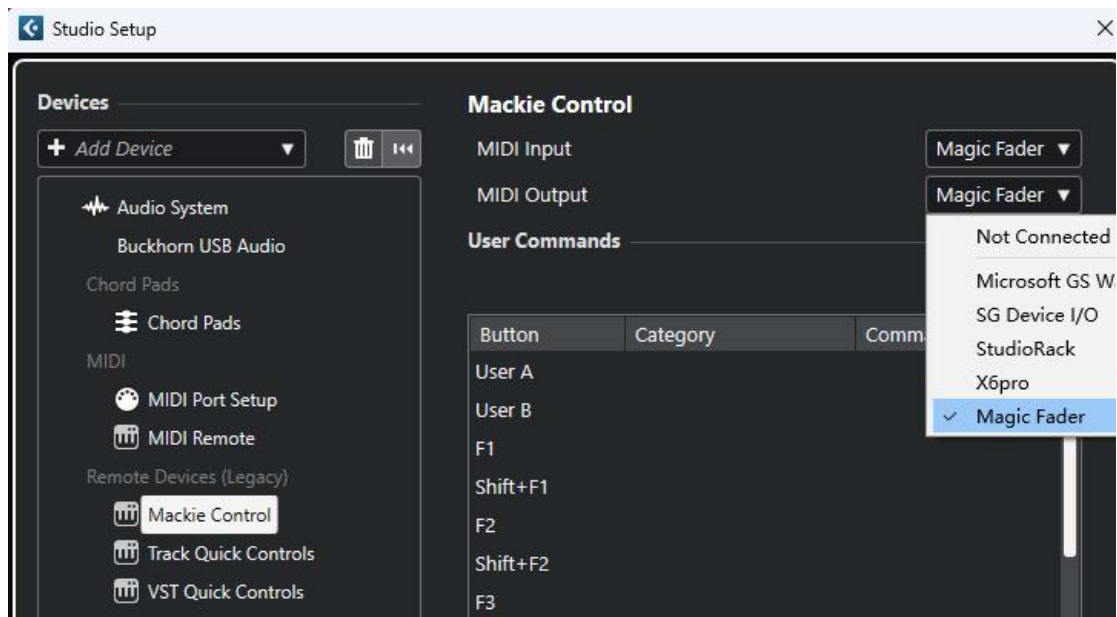
(1) 【Studio】 -> 【Studio setup】



(3) Click '+' select Mackie control



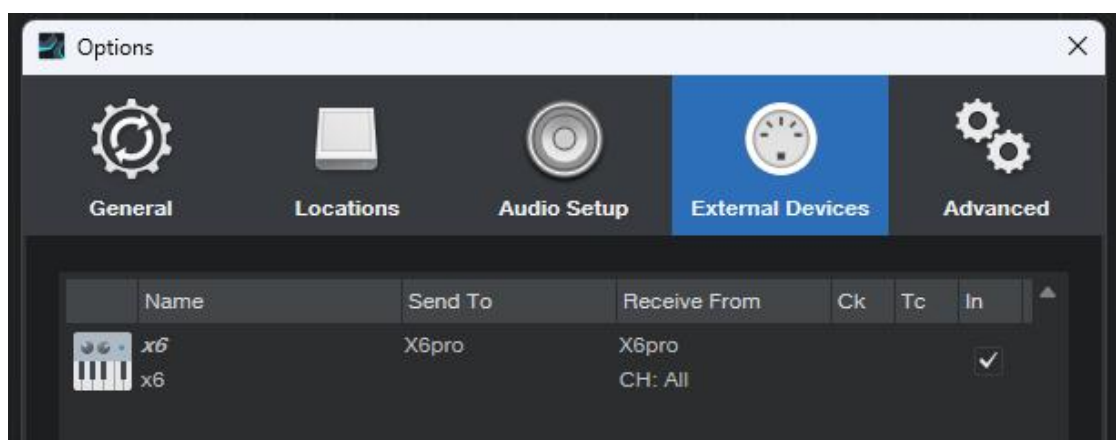
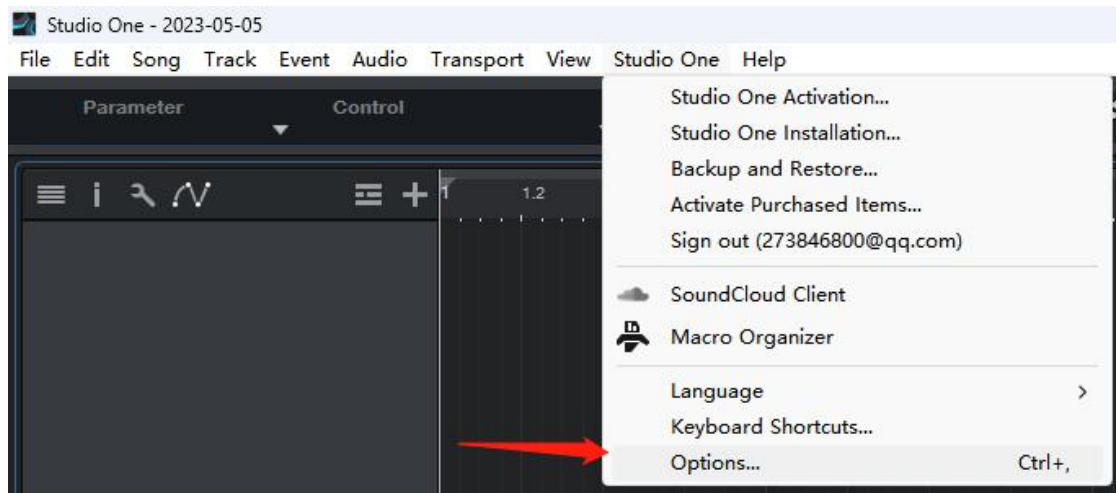
(4) MIDI Input/Output select Magic Fader



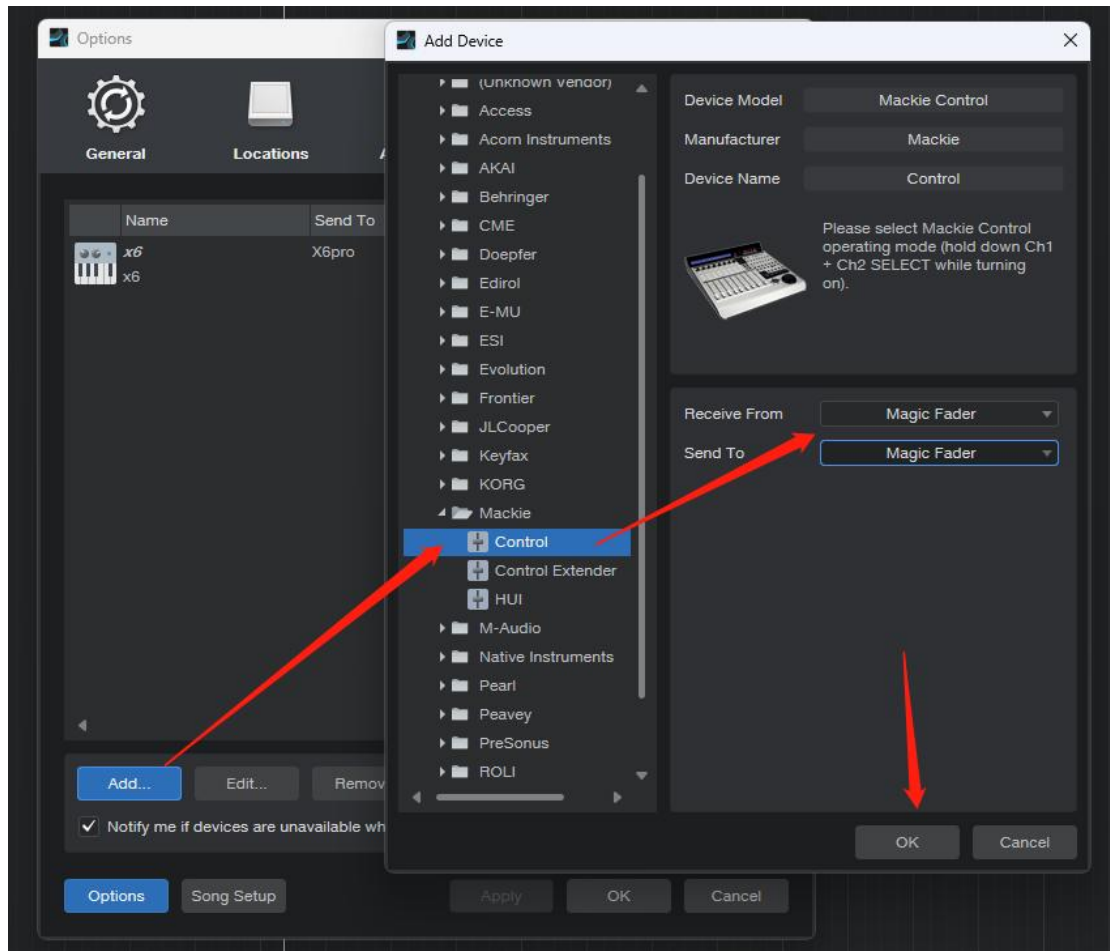
(5) Done

#### 4. Studio One (Select 'STEIBERG MC' mode)

(1) Studio one -> Options -> Select External Devices



(2) 【Add】 -> search【Mackie】 ->Select 【Control】 -> From/To select Magic Fader -> Click 【OK】



(3) Done

## 5. FL Studio (Select 'STEIBERG MC' mode)

(1) Option->MIDI Settings



(2) Controller type select Mackie Control Universal -> Enable

Settings - MIDI input / output devices

MIDI Audio General File Project Info Debug About

Output

Microsoft MIDI Mapper	Microsoft MIDI Mapper
Microsoft GS Wavetable Synth	Software synthesizer
SG Device I/O	MIDI hardware port
StudioRack	MIDI hardware port
X6pro	MIDI hardware port
Magic Fader	MIDI hardware port

Send master sync Port

Synchronization type MIDI clock

Input

SG Device I/O	(generic controller)	<input type="checkbox"/>
StudioRack	(generic controller)	<input type="checkbox"/>
X6pro	(generic controller)	<input type="checkbox"/>
Magic Fader	Mackie Control Universal	<input checked="" type="checkbox"/>

Enable Controller type Mackie Control Universal Port

Link note on velocity to Velocity

Link release velocity to Release

Pickup (takeover mode)

Auto accept detected controller

Foot pedal controls note off

Omni preview MIDI channel Port

Song marker jump MIDI channel Port

Performance mode MIDI channel Port

Generator muting MIDI channel Port

Toggle on release

Refresh device list Update MIDI scripts Enable Image-Line Remote